

NEW E6KX

THE ALTERNATIVE
IN **STAMPED**
STAINLESS STEEL
YOU HAVE BEEN
WAITING FOR



PT. SUMBER TIGA JAYA
Maximizing Performance

BY **caprari**

E6KX

**6" stamped stainless steel
borehole pumps**

PROFESSIONAL AGRICULTURE

WATER SUPPLY

DOMESTIC

INDUSTRIES

The first 6" stamped stainless steel borehole pumps in the EASYWELL family.

The wide product range is further enriched by the E6KX series: robustness, reliability and quality at a competitive price.

The coupling with MPC series submersible motors is guarantee of top performances.

- **ROBUSTNESS** | Compact design and stainless steel components
- **PERFORMANCES** | Guaranteed over time and low energy consumption
- **CAPRARI QUALITY** | Products engineered with Caprari's guaranteed reliability



E6KX

6" stamped stainless steel borehole pumps

4

SIZES

148

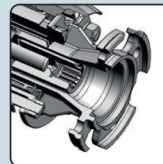
MODELS

TECHNICAL DATA

Frequency	50/60Hz
Flow rate	up to 95m ³ /h
Head	up to 440m
Power	up to 37kW
Sand content (max)	50g/m ³

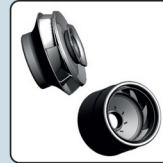


1



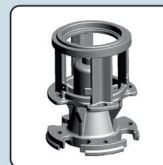
NEMA 4 and 6 coupling:
pumps coupled with
standard motors on the market.
EASY AVAILABILITY

2



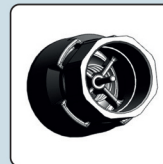
Stainless steel
impellers and diffusers.
*HIGH PERFORMANCE
AND RELIABILITY*

3



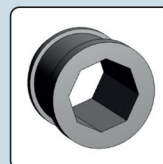
High precision-casted
stainless steel suction casing.
*DURABILITY
GUARANTEED*

4



Valve casing in high
precision-casted stainless steel
with integrated clapper:
no additional valve necessary.
*MORE SAVINGS FOR
THE CUSTOMER AND
EXCELLENT PROTECTION
AGAINST WATER HAMMER*

5



Water-lubricated
radial bearings.
*OPTIMAL PERFORMANCE
EVEN IN THE PRESENCE
OF SAND*

6

Option for booster installation,
with cooling shroud,
in vertical or horizontal position.
FLEXIBILITY OF INSTALLATIONS



For more information :

Jl. Bukit Indah Lontar Rk 3 No. 36, Surabaya, Indonesia

+62 31 9914 3626

mail.support@sumbertigajaya.com

www.sumbertigajaya.com